

The BO Make Over.

... Formatting tips for the Full Client!

Presentation Information



- Author: Jevan Choo Quan
- Company: Xenon Consulting Inc.
- Presentation title:
 - The BO Make Over
 - Tips and Tricks for formatting full client documents
- Presentation abstract:
 - Learn tips and techniques for formatting full client Business Objects reports. This session will focus on the tips for common formatting problems experienced by everyday users of BusinessObjects. See demonstrations of advanced reporting techniques that creates local variables with extended syntax makes the use of Business Objects templates more dynamic. Benefit from hearing tips and techniques for utilizing these advanced reporting technique, based on real-life examples provided.

Today's Topics



- Reporting Tips & Trix
- Formatting Cells
 - Document Functions
 - Inserting images
- Templates
 - Section headers
 - Break footers
- Formatting Breaks
 - Stacked columns
 - Multiple Measures

My Current Laptop



- Windows 2000 sp3, 512RAM
- Enterprise 6.5
- Web Server – JSP - Apache 2.0
- Application Server 4.1 (mod_jk.dll)
- BusinessObjects 6.5
- Repository Oracle 8i

Inspiration



- Most popular competitor
 - MS Excel

- Most popular Reason
 - Formatting

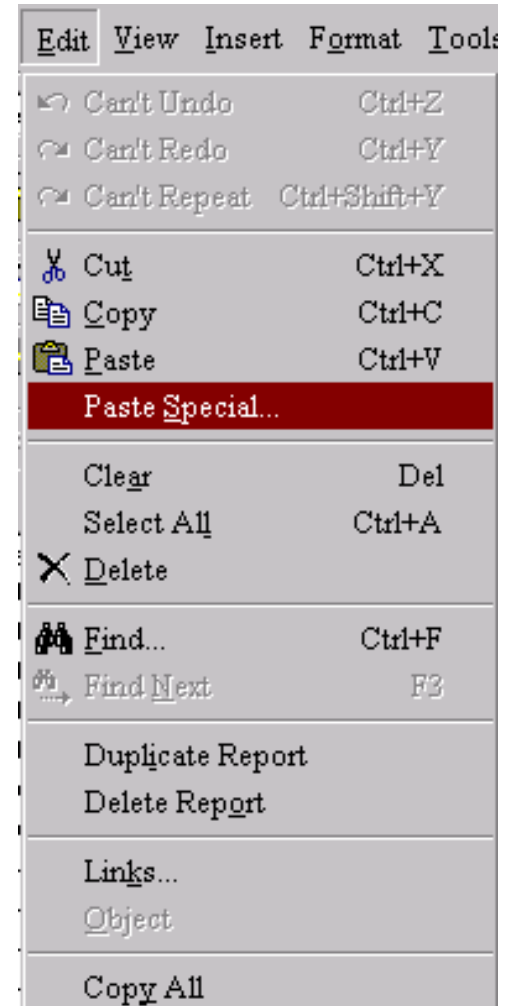
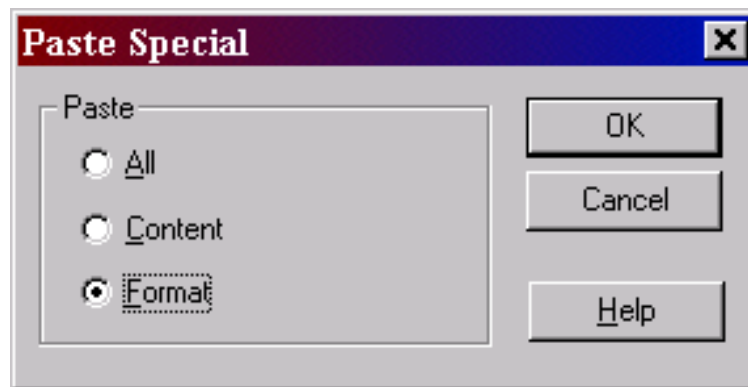
- Most popular action
 - Drag, Drop, Run, export to excel
 - FORMAT (every week/month)

All Data Elements must belong to a Cell or Block

- Data may be
 - Object values <Object Name>
 - Variable <Variable Name>
 - Formula =“formula definition”
 - Constant
- Report Elements
 - Cells
 - Vertical Tables
 - Horizontal tables
 - Crosstabs
 - Charts

Good Part

- You can copy and paste formats of cells



Today's Topics



- Reporting Tips & Trix
- Formatting Cells
 - Document Functions
 - Inserting images
- Templates
 - Section headers
 - Break footers
- Formatting Breaks
 - Stacked columns
 - Multiple Measures

Insert Text Cells



=DocumentName()



=UserResponse(,)

=LastExecutionDate()

By Inserting a free Cell into your report you can display information about your Business Objects documents

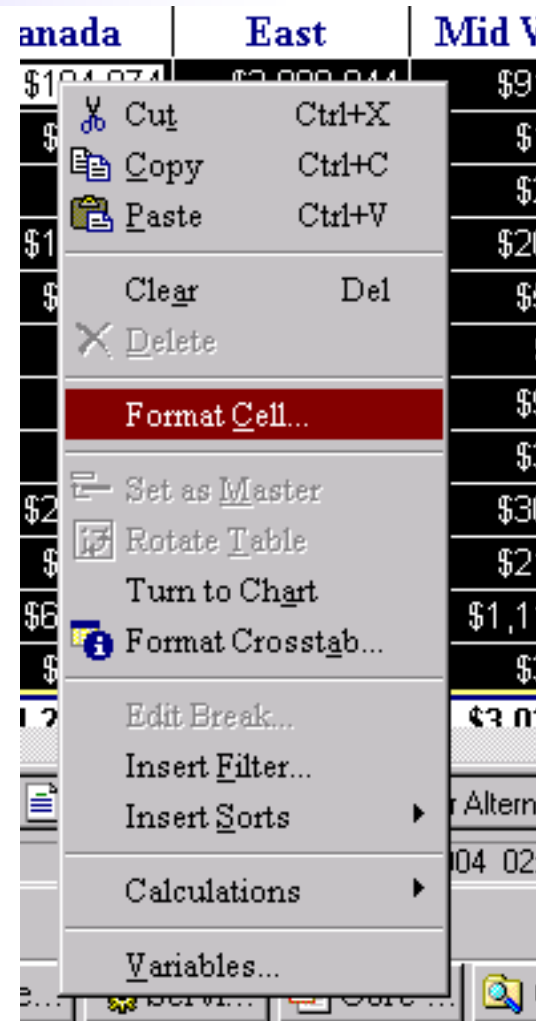
=LineNumber()

=NumberOfRows()

=DocumentPartiallyRefreshed()

Format Cell

- Via the Speed menu (right click) both format cell options are almost identical



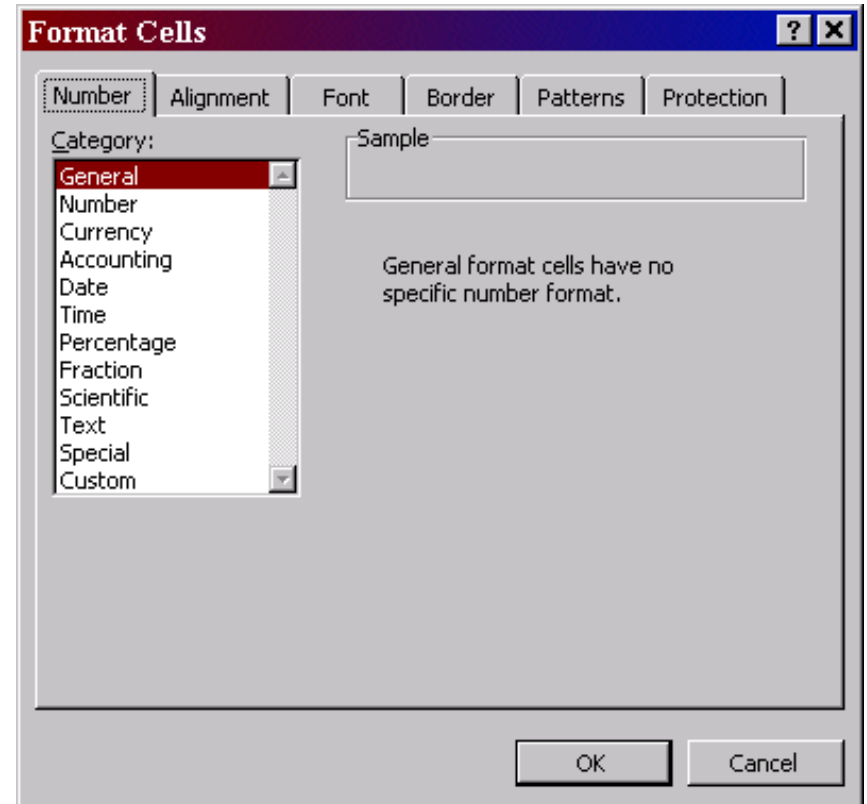
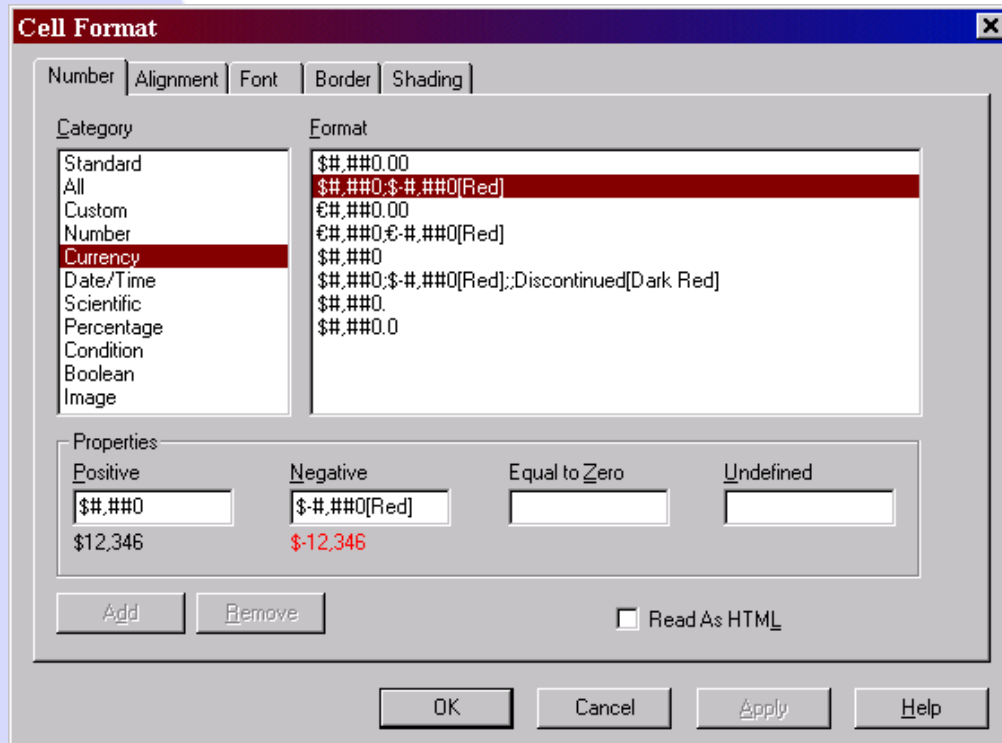
Format Cell



BusinessObjects

VS

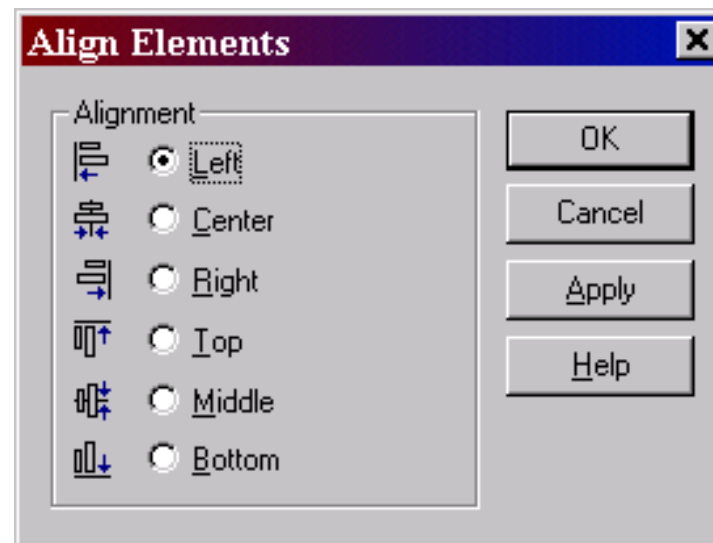
MS Excel



Formatting Cells tip



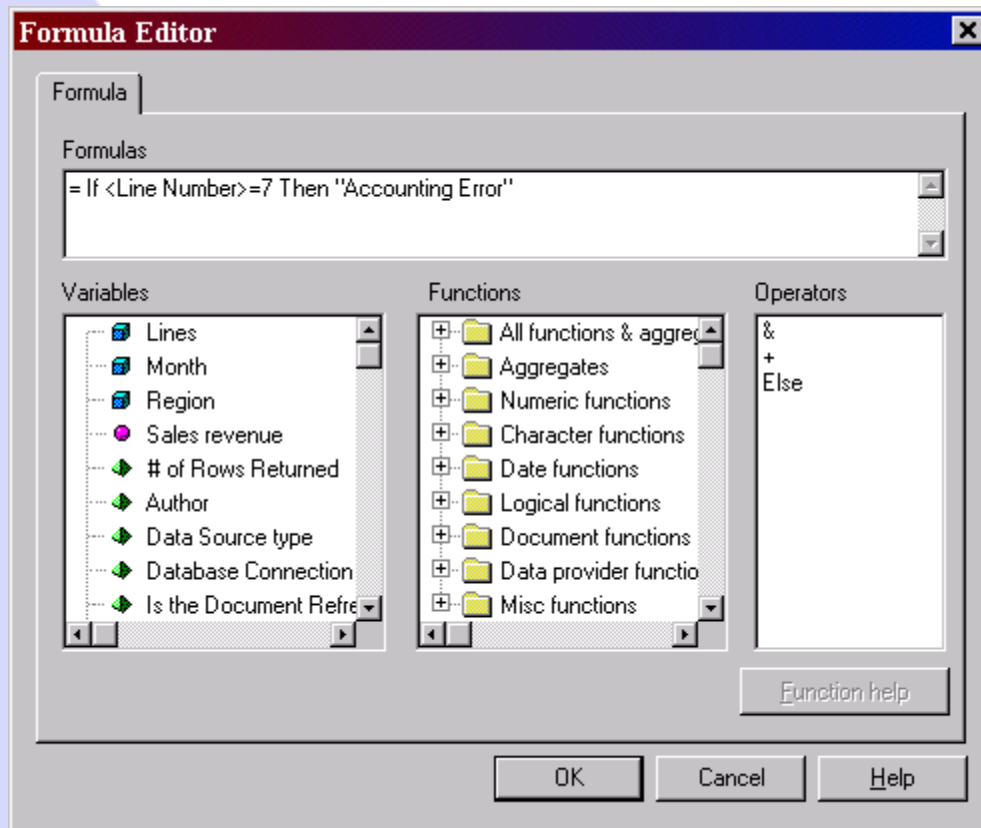
- Using the Ctrl key, select multiple cells to align



Alternative Alerter



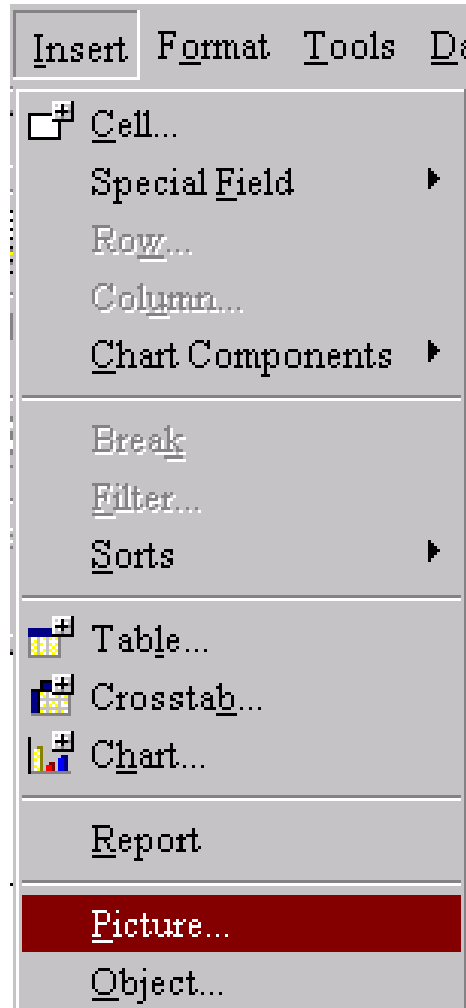
Nesting variables allows more flexibility within objects



= If <Line Number>=7 Then
"Accounting Error"
Else If <Line Number>=10
Then "Verify West coast"

**The formula allows you to
add text based on a each line**

Picture or Object?

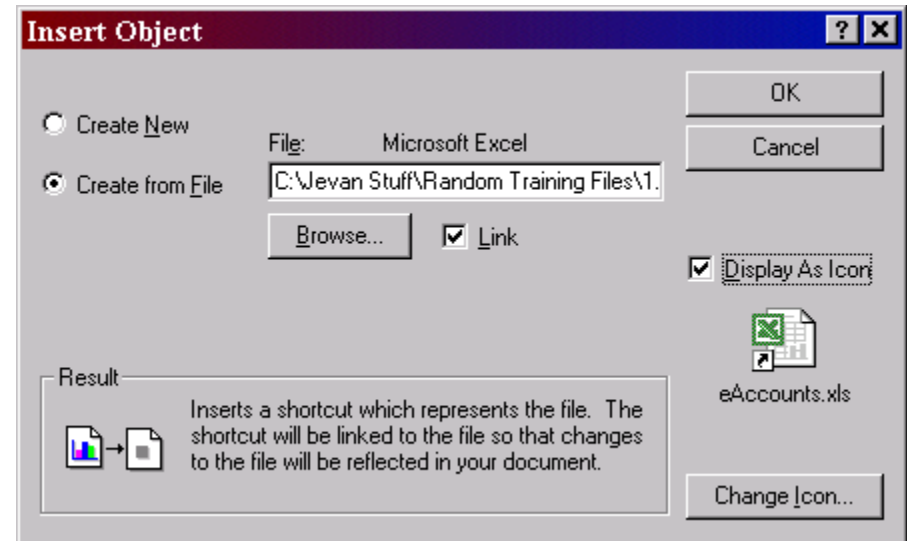
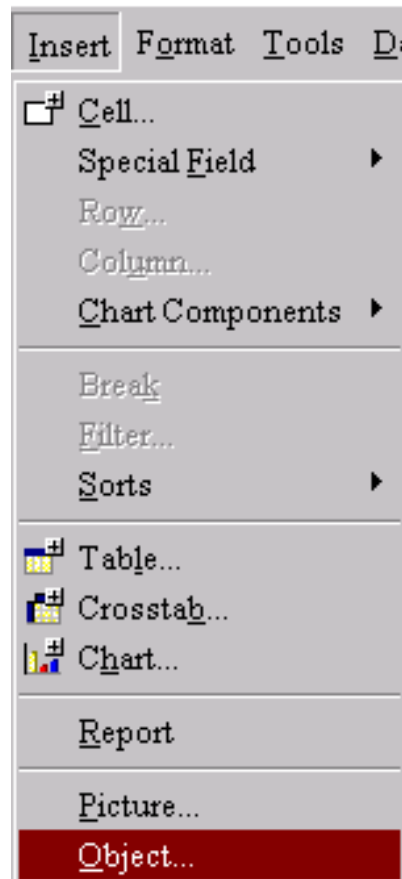


Insert picture will create a dynamic link between the Document and the image

You can only insert .bmp files

Picture or Object?

Objects can be linked or embedded into your document



- **Two ways to show a carriage return**
 - 1. Wrap text
 - 2. Ctrl + m
 - 3. Char(13)

Demo 1



1. Review



- Format many cells at once
 - ALL the excel format options are available
- Add comments to your reports
 - Using formulas you can insert calculations and comments almost anywhere
- Insert images or objects
 - Embed images or any file type

Today's Topics



- Reporting Tips & Trix
- Formatting Cells
 - Document Functions
 - Inserting images
- Templates
 - Section headers
 - Break footers
- Formatting Breaks
 - Stacked columns
 - Multiple Measures

What is a template



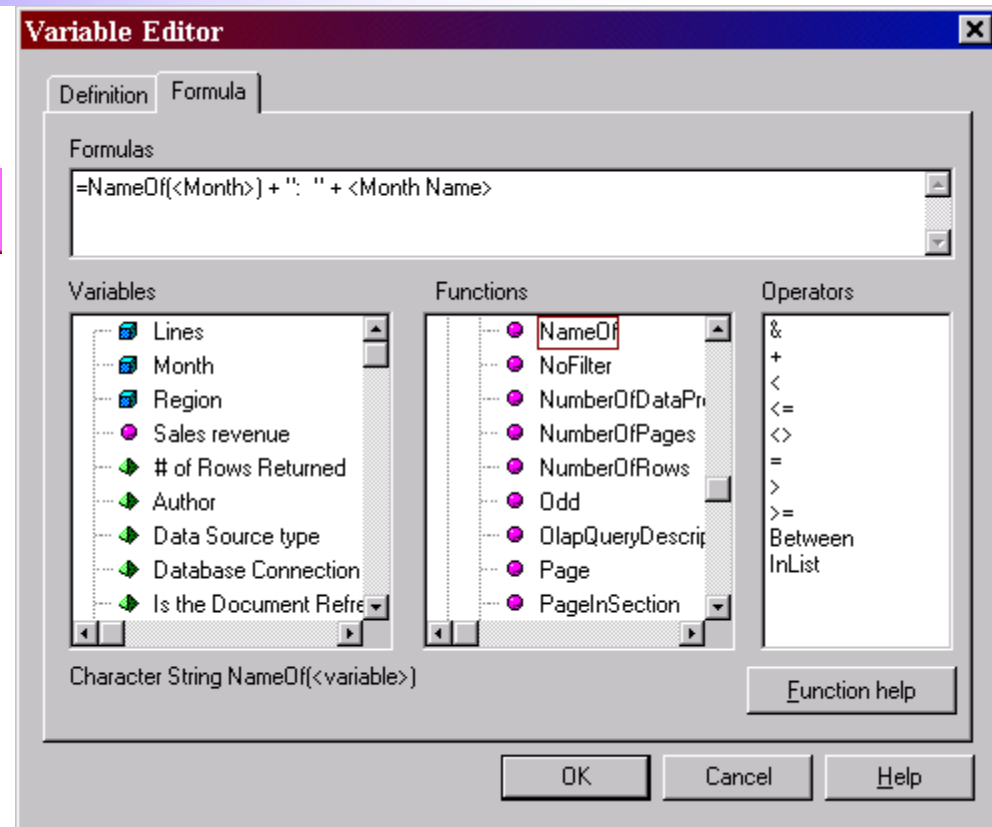
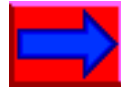
- Business Objects templates (.ret)
- Saves all formatting associated with the document. Eg:
 - Block structures
 - Cell formulas
 - Variables
 - Font sizes, colors, alignments etc.

Creating a template



- Create a report
- Format the layout and structure of the report
- Save the report as a template

Tips & Tricks

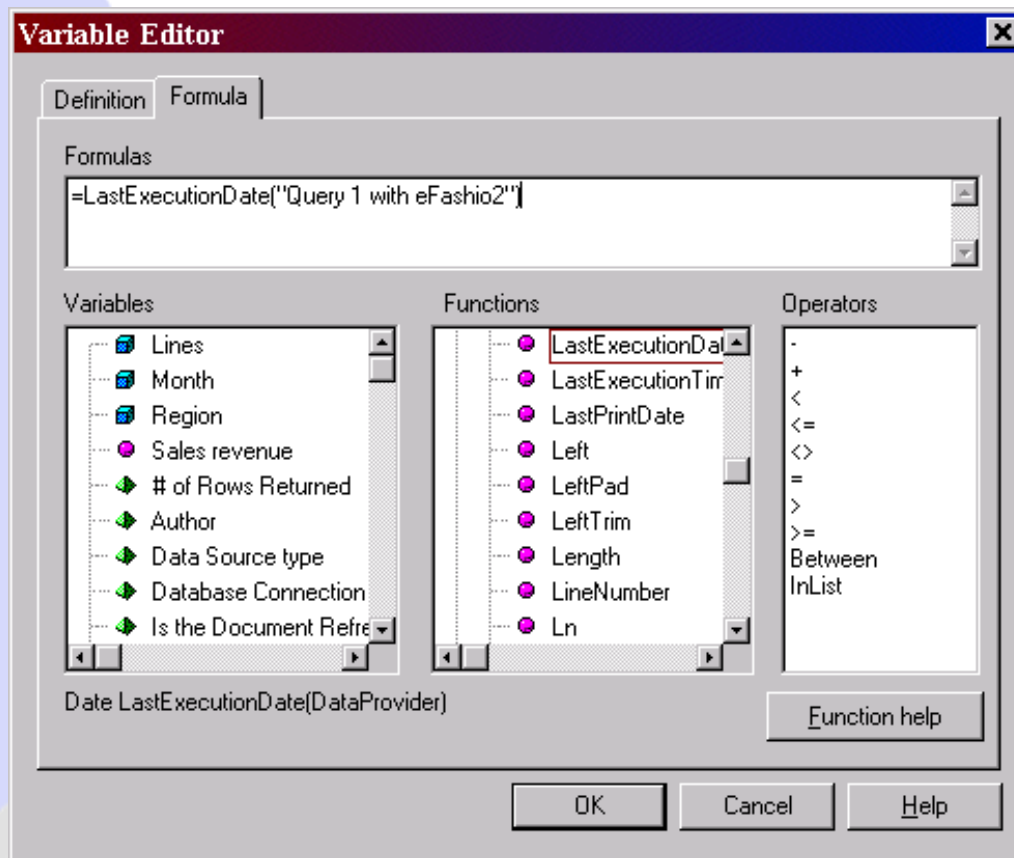


Using the NameOf() Function makes your templates more dynamic

Tips and Tricks

Variables fail when the data Provider name changes

- Problem - =LastExecutionDate("Query 1 with eFashio2")



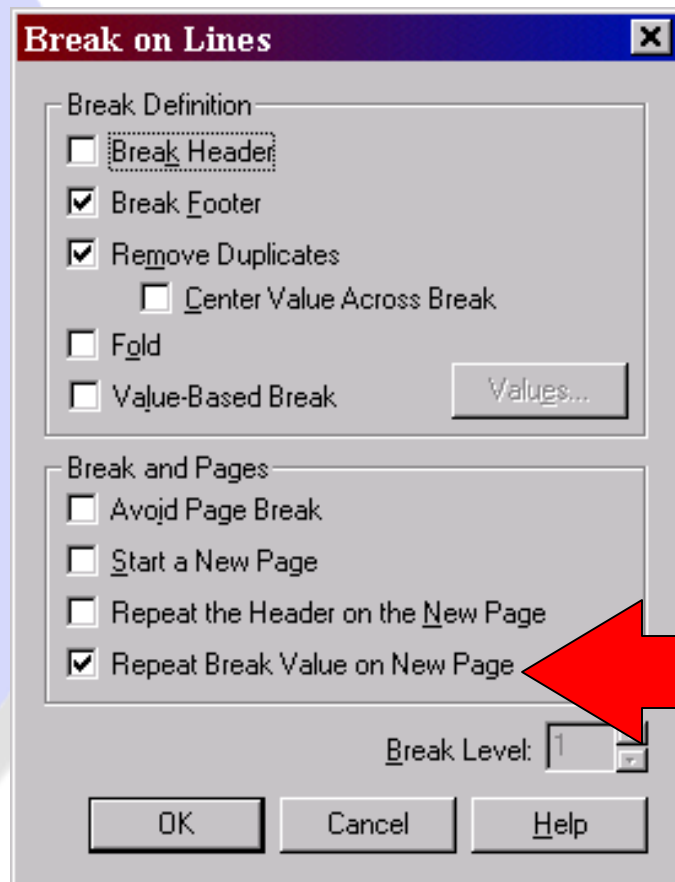
To make your templates dynamic use the DataProvider() function rather than hard coding the data provider name.

**Eg.
=LastExecutionDate(Data Provider(<Lines>))**

Tips and Tricks

Repeat if Break values run over more than one page

- Problem – cannot determine what report is showing



Break value can be repeated on every page

Tips & Tricks



Totals for Lines : City Skirts		\$3,893	\$39,187	\$6,745	\$52,000
City Trousers	Brown		\$13,300	\$3,313	\$11,000
Totals for Lines : City Trousers			\$13,300	\$3,313	\$11,000

1



BONYMAUG

Microsoft Corporation
Connell Corporate Center III
Three Oak Way, Suite 3000
Berkeley Heights, NJ 07922

1. Dynamic Cells

Dresses	Beige		\$11,295	\$2,626	\$9,669
	Brown	\$16,049	\$97,118	\$22,322	\$108,489
	Indigo Fancy	\$4,491	\$18,820	\$3,201	\$14,110
	Naturel	\$3,860	\$17,383	\$2,129	\$19,372
	Oxford Blue Jean	\$1,646	\$6,789	\$1,149	\$7,584
Totals for Lines : Dresses		\$26,046	\$151,404	\$31,426	\$159,860
Jackets	Brown		\$9,235	\$1,929	\$9,106
	Clay		\$9,590	\$4,338	\$13,928

Tip



- You can copy one variables from one BusinessObjects document to another by saving documents as templates

Demo 2



My Second Computer

Today's Topics



- Reporting Tips & Trix
- Formatting Cells
 - Document Functions
 - Inserting images
- Templates
 - Section headers
 - Break footers
- Formatting Breaks
 - Stacked columns
 - Multiple Measures

Stacked Columns



- How do get this

Products	Colors	Canada	East	Mid West	South	West
City Skirts	Beige	\$3,893	\$14,033	\$1,374	\$21,593	\$15,049
City Skirts	Brown		\$14,435	\$2,915	\$19,280	\$16,650
City Skirts	Orange		\$4,556	\$247	\$2,206	
City Trousers	Brown		\$13,300	\$3,313	\$11,394	\$8,223
Dresses	Beige		\$11,295	\$2,626	\$9,869	\$8,371
Dresses	Brown	\$16,049	\$97,118	\$22,322	\$108,365	\$86,990
Dresses	Indigo Fancy	\$4,491	\$18,820	\$3,201	\$14,281	\$9,765
Dresses	Naturel	\$3,860	\$17,383	\$2,129	\$19,312	\$8,862
Dresses	Oxford Blue Jean	\$1,646	\$6,789	\$1,149	\$7,765	\$5,855
Jackets	Brown		\$9,235	\$1,929	\$9,945	\$8,138
Jackets	Clay		\$9,590	\$4,338	\$13,538	\$12,233
Outerwear	Blue Fancy 1		\$11,995	\$3,802	\$19,558	\$5,922
Outerwear	Brown		\$15,393	\$3,362	\$17,494	\$13,630
Overcoats	Brown		\$13,516	\$1,374	\$15,847	\$11,416
Overcoats	Ebony		\$22,382	\$5,513	\$22,154	\$18,889
Accessories	Access		\$79,339	\$26,108	\$105,427	\$84,631
Accessories	Argile Green		\$759			\$312
Accessories	Beach		\$3,893	\$1,387	\$6,120	\$3,588
Accessories	Beige		\$24,835	\$6,431	\$19,810	\$14,630
Accessories	Black/Silver		\$199			
Accessories	Blue Fancy 1		\$36,498	\$7,235	\$45,348	\$24,761

Stacked Columns

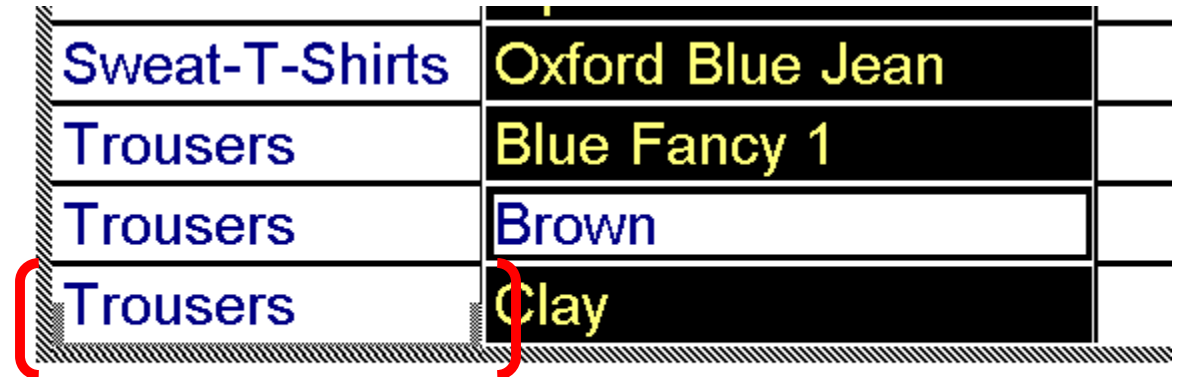


- To look like this...

		Canada	avg	East	avg	Mid West	avg	South	avg	West	avg	Global
All Products	R	\$228,179	0.17	\$1,779,165	0.17	\$488,750	0.17	\$2,143,996	0.17	\$1,781,864	0.17	\$6,421,954
	Q	1,377		10,745		2,815		12,670		10,748		38,355
City Skirts												
Beige.....	R	\$3,893	0.23	\$14,033	0.21	\$1,374	0.23	\$21,593	0.21	\$15,049	0.21	\$55,942
	Q	17		67		6		104		72		266
Brown.....	R			\$14,435	0.23	\$2,915	0.22	\$19,280	0.23	\$16,650	0.24	\$53,281
	Q			62		13		83		69		227
Orange.....	R			\$4,556	0.13	\$247	0.12	\$2,206	0.14			\$7,009
	Q			34		2		16				52
City Skirts	R	3,893		33,024		4,536		43,080		31,699		116,232
City Trousers												
Brown.....	R			\$13,300	0.16	\$3,313	0.22	\$11,394	0.20	\$8,223	0.17	\$36,229
	Q			82		15		56		47		200
City Trousers	R			13,300		3,313		11,394		8,223		36,229
Dresses												
Beige.....	R			\$11,295	0.16	\$2,626	0.15	\$9,869	0.14	\$8,371	0.14	\$32,161
	Q			72		17		71		58		218

Stacked Columns

- Drag the 2nd level hierarchy column under the primary until the insert column bracket appears

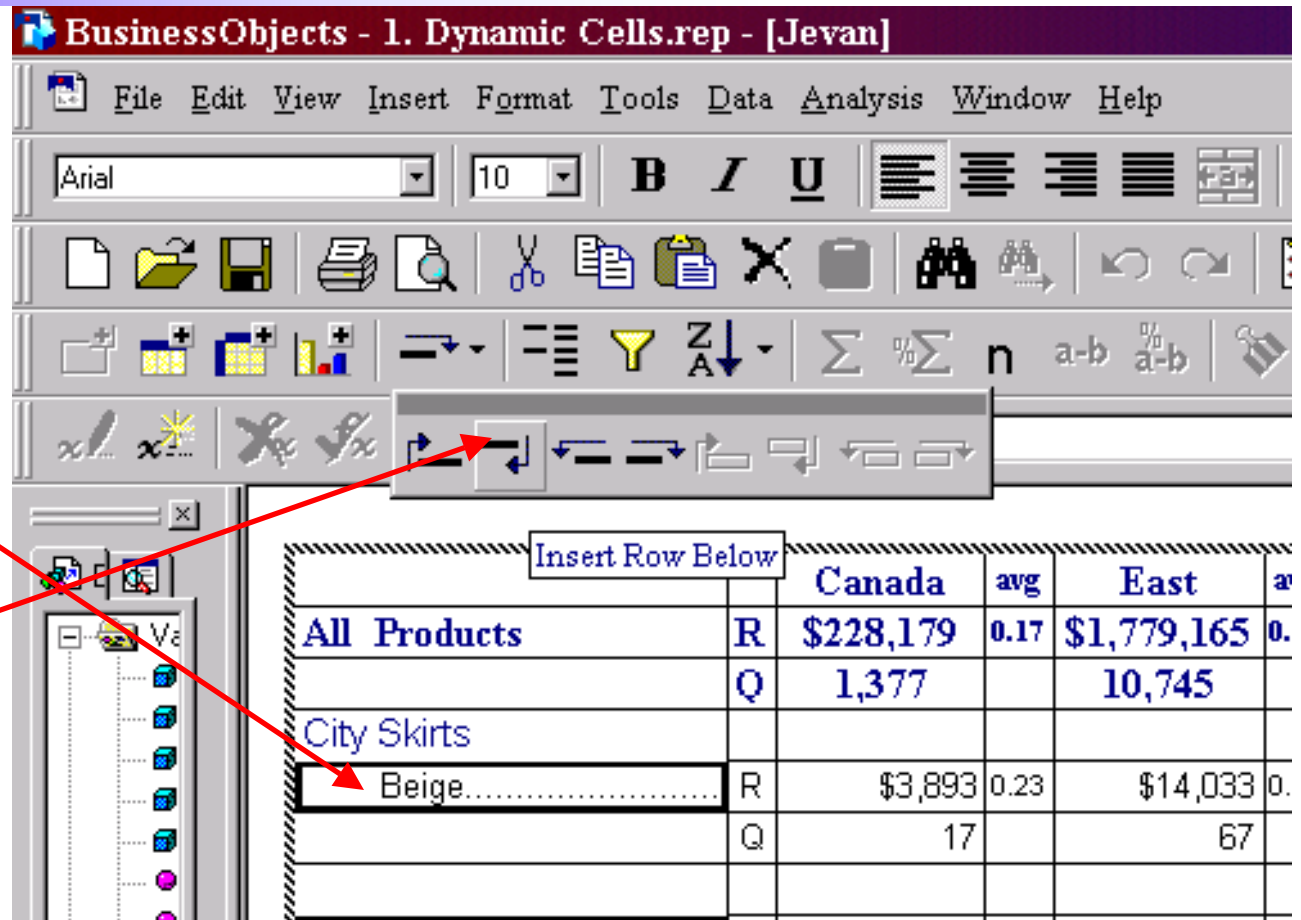


Sweat-T-Shirts	Oxford Blue Jean
Trousers	Blue Fancy 1
Trousers	Brown
Trousers	Clay

Insert Row

- Select the column to insert the row below

- Select the insert Row Below button



The screenshot shows the BusinessObjects interface. The toolbar contains the 'Insert Row Below' button, which is highlighted with a red box. A red arrow points from the 'Insert Row Below' button in the toolbar to the 'Beige' row in the table below. Another red arrow points from the 'Beige' row in the table to the 'Insert Row Below' button in the toolbar.

		Canada	avg	East	a
All Products	R	\$228,179	0.17	\$1,779,165	0.
	Q	1,377		10,745	
City Skirts					
Beige.....	R	\$3,893	0.23	\$14,033	0.
	Q	17		67	

Demo 3



Today's Topics



- Reporting Tips & Trix
- Formatting Cells
 - Document Functions
 - Inserting images
- Templates
 - Section headers
 - Break footers
- Formatting Breaks
 - Stacked columns
 - Multiple Measures

References



- BusinessObjects Board (BOB)
 - www.forumtopics.combusobj/index.php
- Knowledge Base (KB)
 - www.techsupport.businessobjects.com
- BusinessObjects Education
 - Core, Intermediate and Advanced Reporting

Questions



- Contact Information
 - Jevan Choo Quan
 - Xenon Consulting Inc
 - (516) 466-0666
 - www.xenonc.com
 - jevan@xenonc.com

